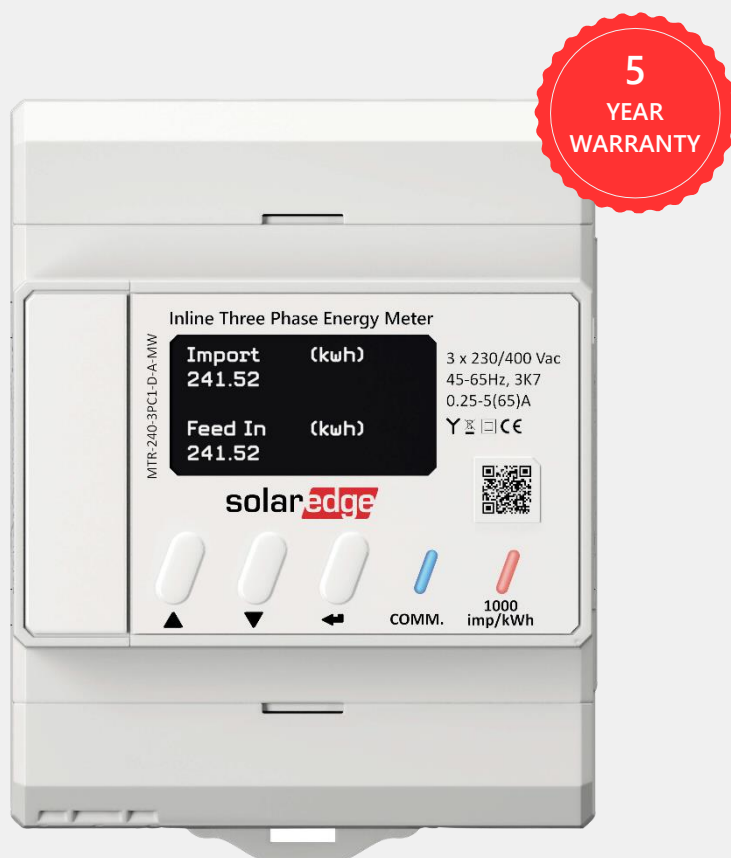


SolarEdge Home Inline Meter



Grow your revenues with an easily installed metering solution that fits comfortably into standard electrical DIN-rail cabinets

- Performs export/import, production, and consumption energy readings with 1% accuracy
- Includes integrated current transformers for faster installations, reduced labor costs, and simplified logistics
- Easier installations using SolarEdge Home Network to communicate wirelessly with the inverter (RS485 connectivity is optional)
- Supports export/import limitation and SolarEdge Smart Energy applications
- Integrates smoothly and easily with SolarEdge Smart Energy solutions
- Enables direct connection of up to 65A per phase, for single and three phase grid connections
- Quick setup with automatic meter detection by the SolarEdge inverter
- Intuitive meter configuration and visibility to meter status using the SetApp mobile app

/ SolarEdge Home Inline Meter

Part Number	MTR-240-3PC1-D-A-MW ⁽¹⁾	MTR-240-1PC1-DW-MW ⁽¹⁾	
Model Number	MTR EU3	MTR EU1	UNITS
ELECTRICAL SERVICE			
Nominal Voltage	3 x 230/400	1 x 230	Vac
Voltage Range (Line to Line)	320 – 460	–	Vac
Voltage Range (Line to Neutral)	184 – 264.5		
Supported Grids	L1 / L2 / L3 / N (WYE)	L / N	
Maximum Power Consumption (SolarEdge Home Network or Wireless Connection)	< 2.0		W
Maximum Power Consumption (RS485 Wired Connection)	< 1.8		
AC Frequency	45 – 65		Hz
Maximum Current (Imax)	65		A
Transitional Current (Itr)	0.5		A
Starting Current (Ist)	20		mA
Minimum Current (Imin)	0.25		A
Reference Current (Iref)	5		A
Active Energy Accuracy	EN54070 Class B ⁽²⁾ ; IEC 62053-21 Class 1		
Active Energy Accuracy Error (Itr ≤ I < Imax)	1		%
Active Energy Accuracy Error (Imin ≤ I < Itr)	1.5		
Reactive Energy Accuracy	IEC 62053-23 Class 2		
Reactive Energy Accuracy Error (Itr ≤ I < Imax)	2		%
Reactive Energy Accuracy Error (Imin ≤ I < Itr)	2.5		
Over-voltage	CAT III 600		Vac
Compatible Inverters	All SetApp-enabled residential inverters (up to SE15K)		
RS485 COMMUNICATION			
RS485 Terminal Cross Section	0.2 – 2		mm ²
Interface	RS485 half duplex, 3 wires (A, B, GND)		
Protocol	MODBUS RTU		
Power Register Update Resolution	<200		ms
All Other Registers	< 4		sec
RS485 Line Termination	120 (selectable)		Ω
WIRELESS COMMUNICATION⁽³⁾			
Operating Frequency Range	863 – 870 (EU) 916 – 924 (AUS)		MHz
Modulation	OQPSK		
Antenna Connector	SMA-RP		
External Antenna Mounting ⁽⁴⁾	Wall mount with bracket		
EIRP with Antenna	14 (EU) 20 (AUS)		dBm
PULSE DISPLAY			
Pulse Frequency	1000		imp / kWh
Pulse Length	5 (min), 80 (max)		ms
INSTALLATION/MECHANICAL			
Display	8 digits		
Protection Rating (Indoor)	IP51		
Mounting Support	DIN rail		
Weight	320		g
Material	PC Lexan 503R		
Dimensions (W x H x D)	72 x 90 x 58		mm
AC Terminal Cross Section Area	1.5 – 25		mm ²

(1) Supported from inverter software version 4.14.xx and higher.

(2) EN54070 Class B, when AC inputs are connected to the upper terminal blocks. EN54070 Class A, when AC inputs are connected to the lower terminal blocks.

(3) SolarEdge Home Network wireless communication requires inverter support.

(4) External antenna kit must be purchased separately (PN: SE-ANT-ENET-HB-01).

/ SolarEdge Home Inline Meter

Part Number	MTR-240-3PC1-D-A-MW	MTR-240-1PC1-DW-MW	
Model Number	MTR EU3	MTR EU1	UNITS
ENVIRONMENTAL			
Operating Temperature	-40 to +70 Suitable for outdoor installations		°C
Storage Temperature	-40 to +85		°C
Relative Humidity (non-condensing)	75 (yearly average) 95 (30 days/year)		%
Installation Altitude	< 2000		m
Pollution Degree	2		
STANDARD COMPLIANCE			
Safety	UL 61010-1; CAN/CSA-C22.2 No. 61010-1-04; IEC 61010-1		
Immunity	EN 61000-4-8; EN 61000-4-2; EN 61000-4-3; EN 61000-4-4; EN 61000-4-5; EN 61000-4-6; EN 61000-4-11		
Emissions	FCC Part 15, Class B; EN 55032 Class B; EN 61000-3-2; EN 61000-3-3		

SolarEdge is a global leader in smart energy technology. By leveraging world-class engineering capabilities and with a relentless focus on innovation, SolarEdge creates smart energy solutions that power our lives and drive future progress.

SolarEdge developed an intelligent inverter solution that changed the way power is harvested and managed in photovoltaic (PV) systems. The SolarEdge DC optimized inverter maximizes power generation while lowering the cost of energy produced by the PV system.

Continuing to advance smart energy, SolarEdge addresses a broad range of energy market segments through its PV, storage, EV charging, UPS, and grid services solutions.

-  SolarEdge
-  @SolarEdgePV
-  @SolarEdgePV
-  SolarEdgePV
-  SolarEdge
-  www.solaredge.com/corporate/contact

solaredge.com

© SolarEdge Technologies, Ltd. All rights reserved. SOLAREEDGE, the SolarEdge logo, OPTIMIZED BY SOLAREEDGE are trademarks or registered trademarks of SolarEdge Technologies, Inc. All other trademarks mentioned herein are trademarks of their respective owners. Date: August 1, 2023 DS-000001-ENG Subject to change without notice.

Cautionary Note Regarding Market Data and Industry Forecasts: This brochure may contain market data and industry forecasts from certain third-party sources. This information is based on industry surveys and the preparer's expertise in the industry and there can be no assurance that any such market data is accurate or that any such industry forecasts will be achieved. Although we have not independently verified the accuracy of such market data and industry forecasts, we believe that the market data is reliable and that the industry forecasts are reasonable.

