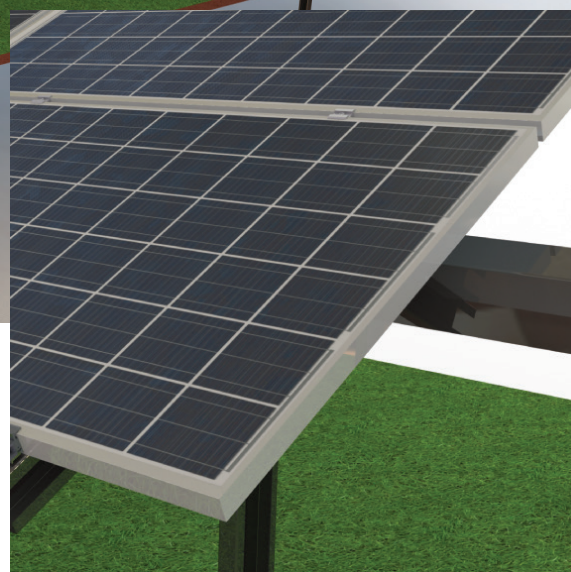
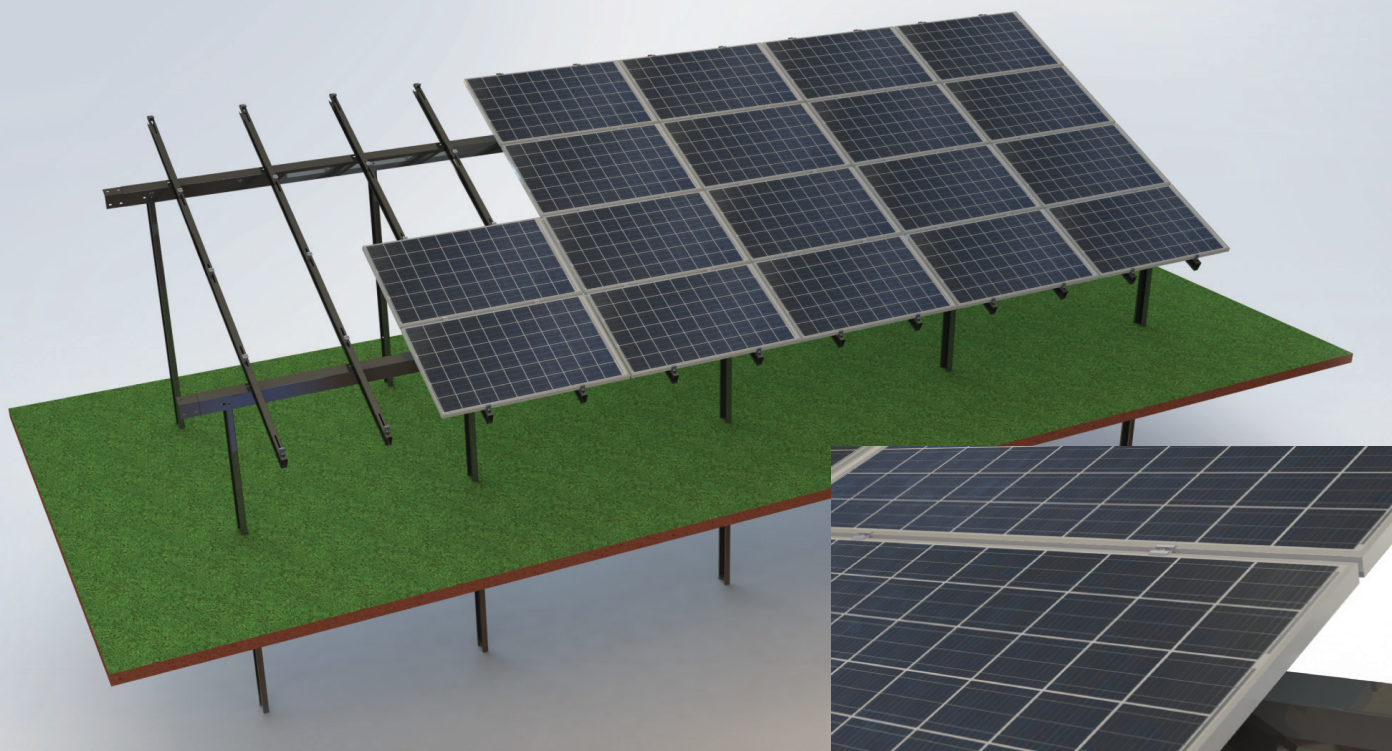


SYSTEM CORAB WS-007



Materiał / Material:

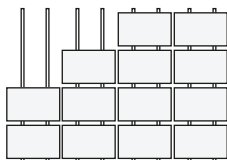
stal konstrukcyjna o podwyższonej wytrzymałości /
structural steel with increased durability

**Powłoka antykorozyjna /
Anti-corrosion coating:**

Magnelis®

**Układ modułów /
Modules layout:**

poziomy, 4 rzędy /
landscape, 4 rows



Kąt / Angle:	Indeks / Index:	Sposób montażu / Installation:
25°	XFS_WS007	wbijanie w grunt / rammed into the ground

Opcje / Option:

- mocowanie inwertera /
inverter mounting set
- mocowanie do fundamentu /
foundation foot
- dodatkowe stężenia /
additional cross-bracings
- przystosowany do modułów szkło-szkło /
adapted for glass-glass modules
- kąt 20°, 30° / angle 20°, 30°

CORAB WS-007



INSTRUKCJA MONTAŻU

System wolnostojący, dwupodporony
wbijany w ziemię
4 moduły w rzędzie poziomo



INSTALLATION MANUAL



Ground mounted system, double support
rammed into the ground,
4 rows of landscape modules

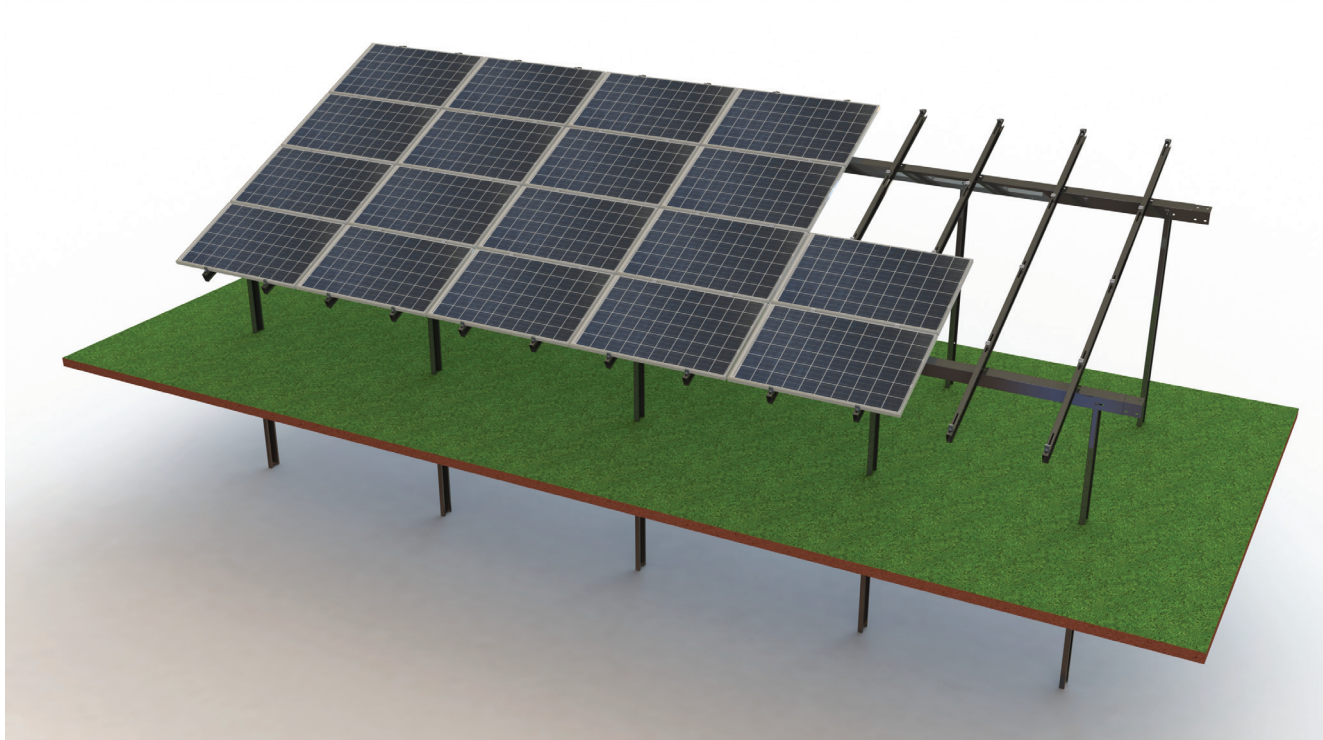


Narzędzia potrzebne do montażu/Tools needed for installation:


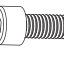
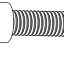


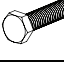

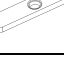
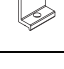
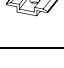


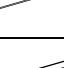
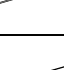
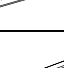



	rozmiar/size 6
	wkrętarka/screwdriver

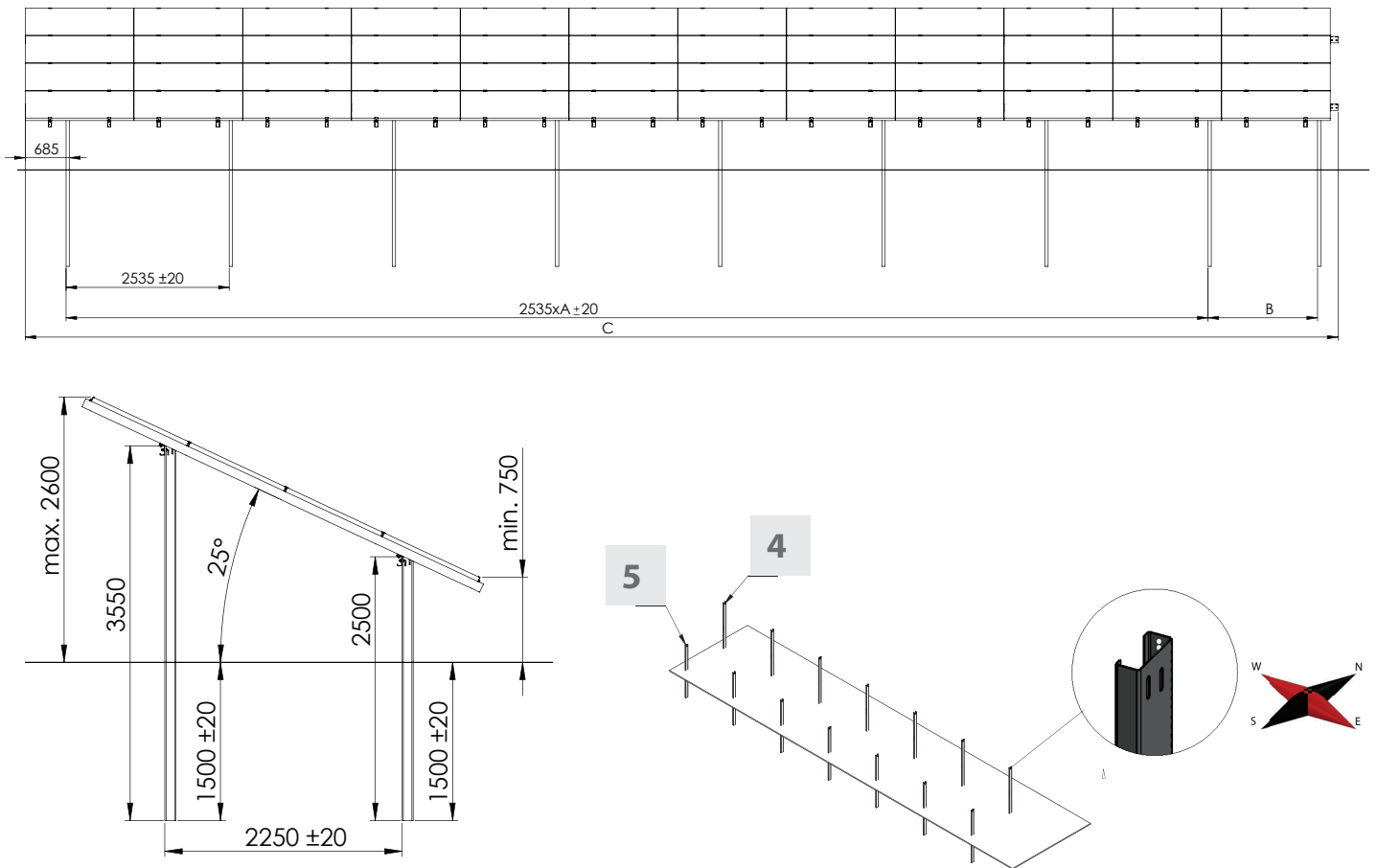
	rozm./size 2 x 19 mm
	koncówki - bity imbusowe/ screwdriver bits



Elementy/Elements

LP	Image	Indeks Index	Nazwa Name	Ilość modułów / Number of PV modules										
				48	44	40	36	32	28	24	20	16	12	8
15		M935	Podkładka sprężysta M8 Spring washer M8	120	110	100	90	80	70	60	50	40	30	20
14		M485	Śruba imbusowa M8x20 Socket screw M8x20	48	44	40	36	32	28	24	20	16	12	8
13		M682	Śruba imbusowa M8x55 Socket screw M8x55	72	66	60	54	48	42	36	30	24	18	12
12		M635	Nakrętka M12 Nut M12	90	84	80	66	60	56	42	36	32	18	12
11		M882	Podkładka sprężysta M12 Spring washer M12	90	84	80	66	60	56	42	36	32	18	12
10		M826	Śruba M12x30 Screw M12x30	90	84	80	66	60	56	42	36	32	18	12
9		XPF_M631	Podkładka M12 Washer M12	180	168	160	132	120	112	84	72	64	36	24
8		XPF_NAK001	Nakrętka młotkowa konstrująca 12x60x4 Hammer nut 12x60x4	120	110	100	90	80	70	60	50	40	30	20
7		Y_KK0019	Klema końcowa regulowana Adjustable end clamp	48	44	40	36	32	28	24	20	16	12	8
6		XPF_KL014	Klema środkowa Middle clamp	72	66	60	54	48	42	36	30	24	18	12
5		XPF_WS007N.4.0000	Podpora przednia L=2500 Front support L=2500	9	8	8	7	6	6	5	4	4	3	2
4		XPF_WS007N.3.0000	Podpora tylna L=3550 Rear support L=3550	9	8	8	7	6	6	5	4	4	3	2
3		XPF_WS007N.2.0002	Belka wzdużna L=1690 Horizontal beam L=1690	-	-	2	-	-	2	-	-	2	-	-
		XPF_WS007N.2.0001	Belka wzdużna L=3380 Horizontal beam L=3380	-	2	-	-	2	-	-	2	-	-	2
2		XPF_WS007N.2.0000	Belka wzdużna L=5190 Horizontal beam L=5190	8	6	6	6	4	4	4	2	2	2	-
1		XPF_WS007N.1.0000	Szyna skośna L=4160 Slanted beam L=4160	24	22	20	18	16	14	12	10	8	6	4

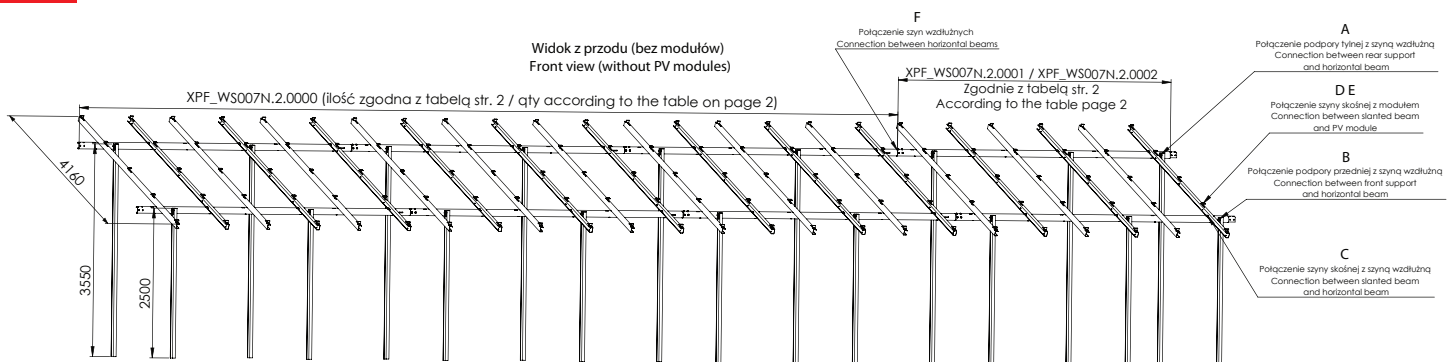
1

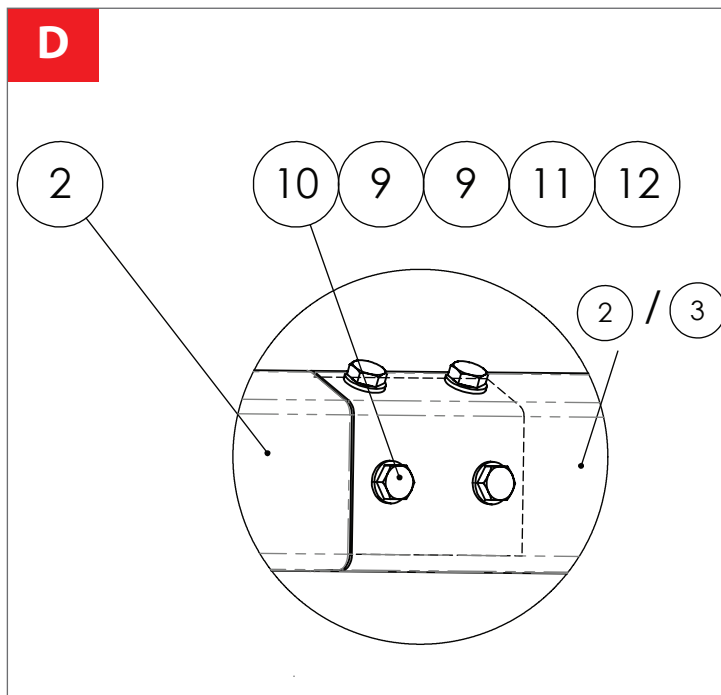
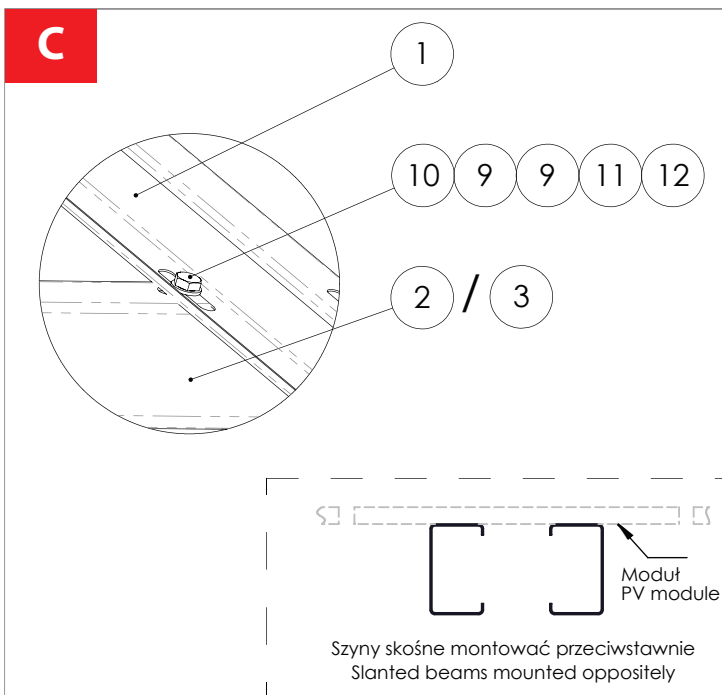
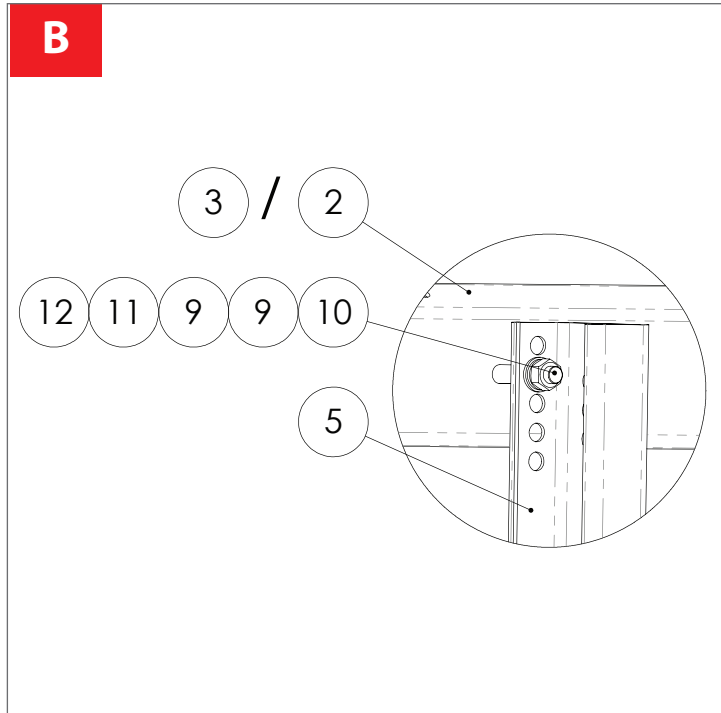
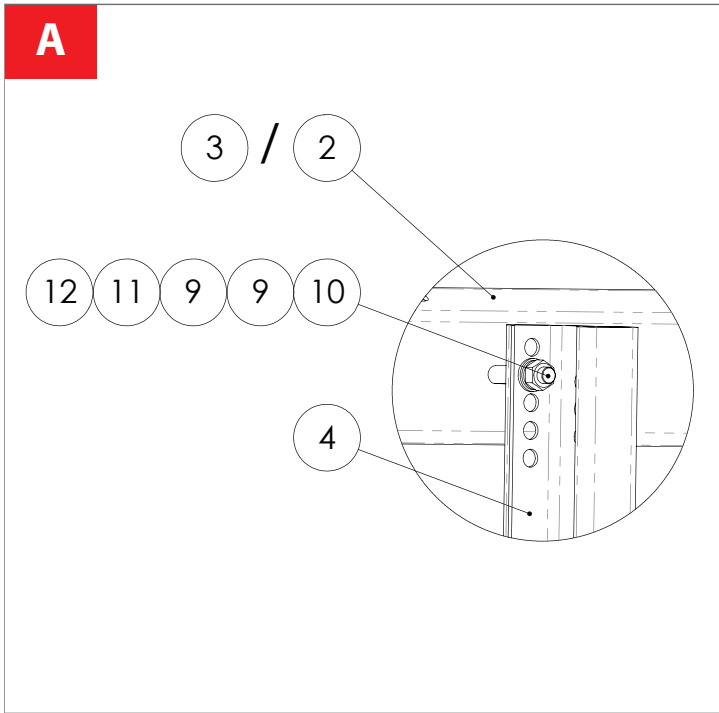


Ilość modułów / Number of PV modules

	48	44	40	36	32	28	24	20	16	12	8
A	7	7	6	5	5	4	3	3	2	1	1
B	1700	-	850	1700	-	850	1700	-	850	1700	-
C	20400	18590	16900	15330	13520	11830	10260	8450	6760	5190	3380

2





Schemat łączenia śrub
Scheme of tightening screws

Momenty dokręcenia śrub Screws tightening torque	
Wielkość śruby Screw size	Moment [Nm] Torque [Nm]
M12	57
M8	Zgodnie z instrukcją montażu modułu According to instalation manual of modules

